



# Actions and plans 2009

---

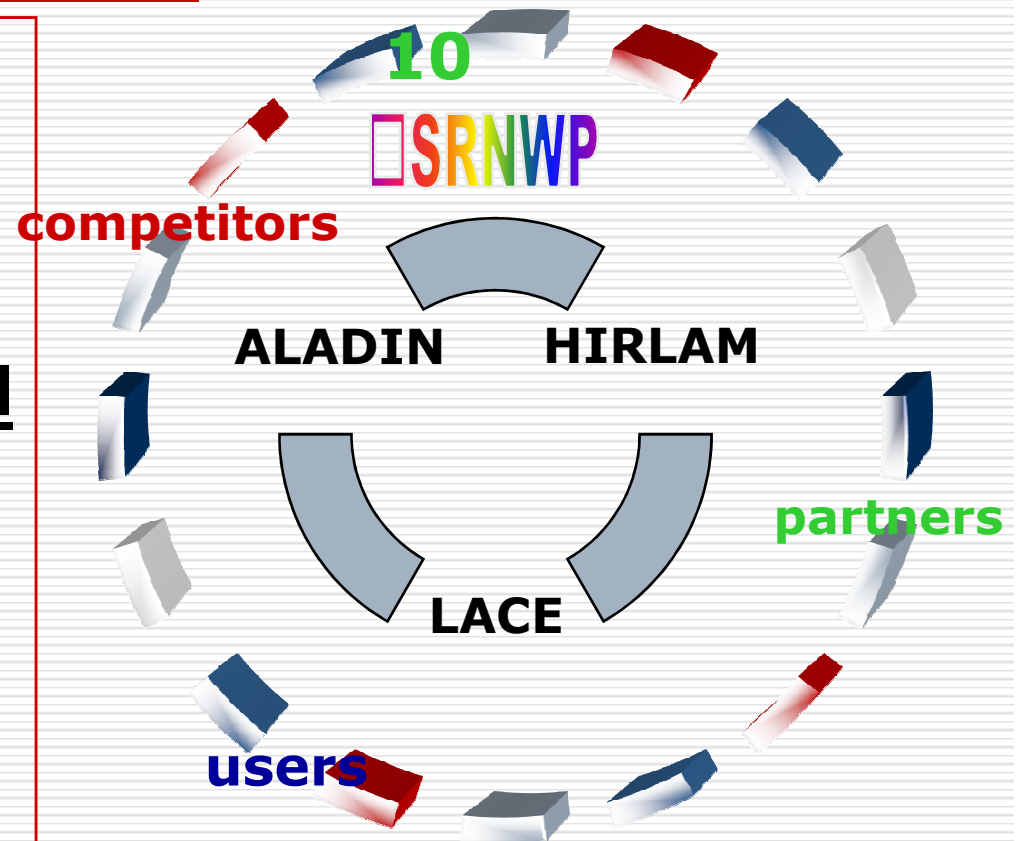
***Dijana Klarić***

*Met service of Croatia*

RC LACE Project Manager

**[www.rclace.eu](http://www.rclace.eu)**

- ✓ **LACE 1<sup>st</sup> year at new structure**
- ✓ **Projects & Technical Actions**
- **R&D highlights**
- ✓ **SRNWP**



## .....defining the rôle

**RC LACE** is international cooperation of National (Hydro-) Met. Services that coach **regional activities** at the area of meso-scale NWP in the terms of

**scientific achievements and  
operative implementations.**



**Operative impl.**

**or**

**"how to perform and optimize  
ALADIN activities at CE"**

---

**Projects are bringing the top R&D achievements  
toward operative use**

**4 Areas for R&D → 4 Projects**

- ✓ Operational **3D Var system** for LACE (HMS)  
**Common observation pre-processing (HMS)**
- ✓ Implementation of **ALADIN NH** dynamics (CHMI)
- ✓ Operational **ALARO phy at 5km** mesh size (CHMI)
- Common **LAM EPS - ALADIN-LAEF** (ZAMG)  
processed at ECMWF,  
**products at LACE WEB page, raw data at MARS DB**

# Operational 3D Var results 2008/2009

## Objectives

- ❖ Centralized preprocessing of observations
- ❖ Installation of atmosph. (3DVAR) and surface (CANARI OI) analysis systems in LACE centers
- ❖ Enhanced use of high frequency observations
- ❖ Use of high resolution observations

✓ **OPLACE**

**Existing at Hu, Cz**

**New**

- ✓ **Au**
- ✓ **Cr**
- ✓ **Si**

**A) Delays**

➤ **Local experts required**

**B) Excellent networking via WEB forum**

➤ **Test with National data**

# Implementation of ALADIN NH dynamics

## Objectives

- ❖ Validation of the current NH dynamics
- ❖ Improvements and development
- ❖ Code optimization of the NH dynamics
- ❖ Operational implementation

✓ **cy32t1**

### ➤ **ALADIN “style” VFE**

#### **A) Delays**

➤ **Due to cy35t1 delays**

#### **B) many num. issues**

- **design of 3D turbulence sh.**
- **SLHD triggering**
- **new sL interpolators**

➤ **Prolonged for 2010**

## Operational ALARO at 5km results 2008/2009

- ❖ Development of the schemes
  - ❖ Scientific maintenance of the code
  - ❖ Operational implementation
- \*at 2010 with NH dynamics**

- ✓ **pTKE => e-f TKE**
- ✓ **Radiation scheme for aerosols**

- ✓ **Validation 4.4km**

**ALARO 3MT daily:**

- ✓ **Au**
- ✓ **Cz**
- ✓ **Si at LACE WEB**

**A) New methods for 2D verification are needed**  
**B) Low Cloudiness problem**

## ALADIN-LAEF results 2008/2009

### Objectives

- ❖ *Uncertainties in analysis*
- ❖ *Uncertainties in model physics*
- ❖ *Co-operation with GLAMEPS*

### New LAEF:

#### Operative BBSM

- **daily runs at ECMWF**
- **products at MARS DB**
- ✓ **Tuning and calibration**

Studies on combination of multi-EPS

- ✓ **Row products for GLAMEPS**

**A) CPU at ECMWF**

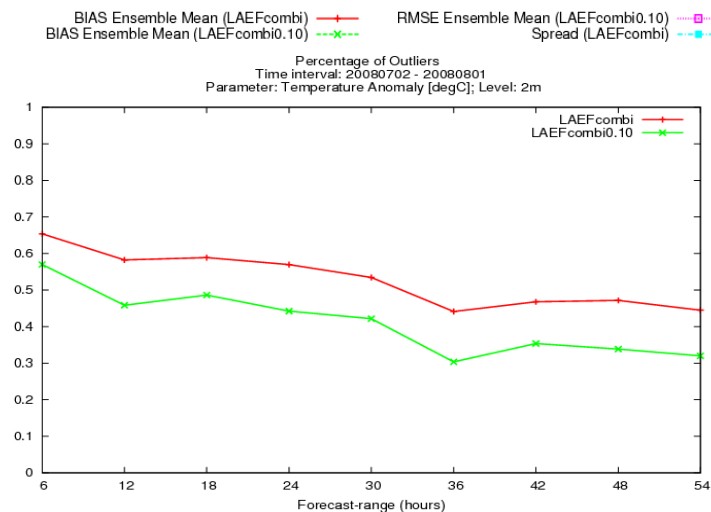
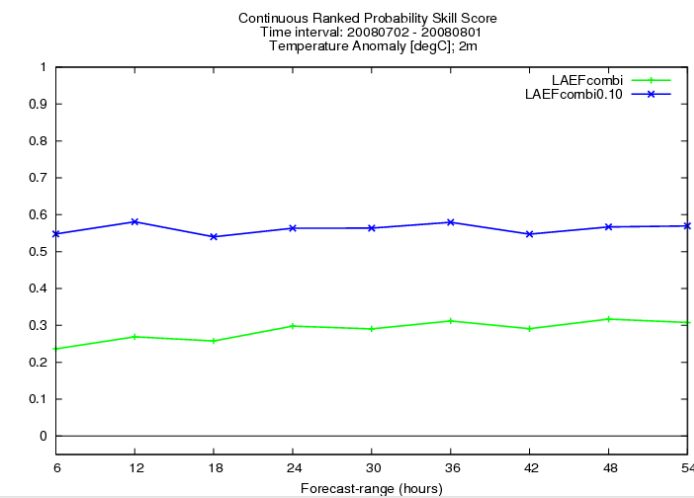
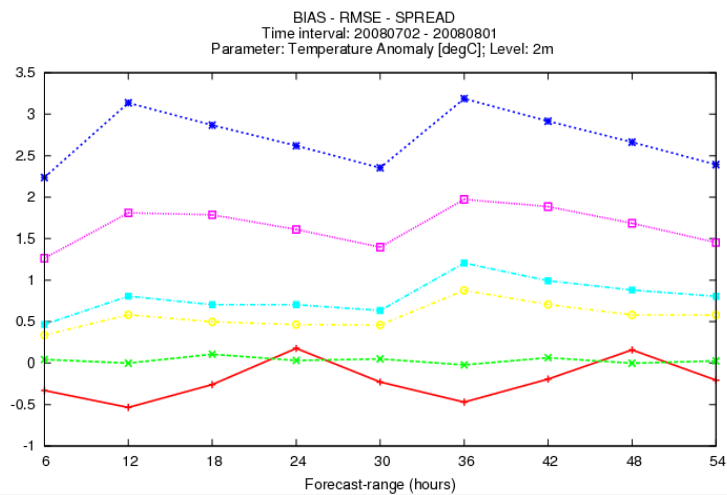
**B) Tuning and calibration**

**C) International visibility**

**B08RDP**

# Combination: LAEF/ECMWF + LAEF/PEARP

## Bias correction first, then combination



small spread, but better relation  
between rms error and spread,  
better outlier, better skill

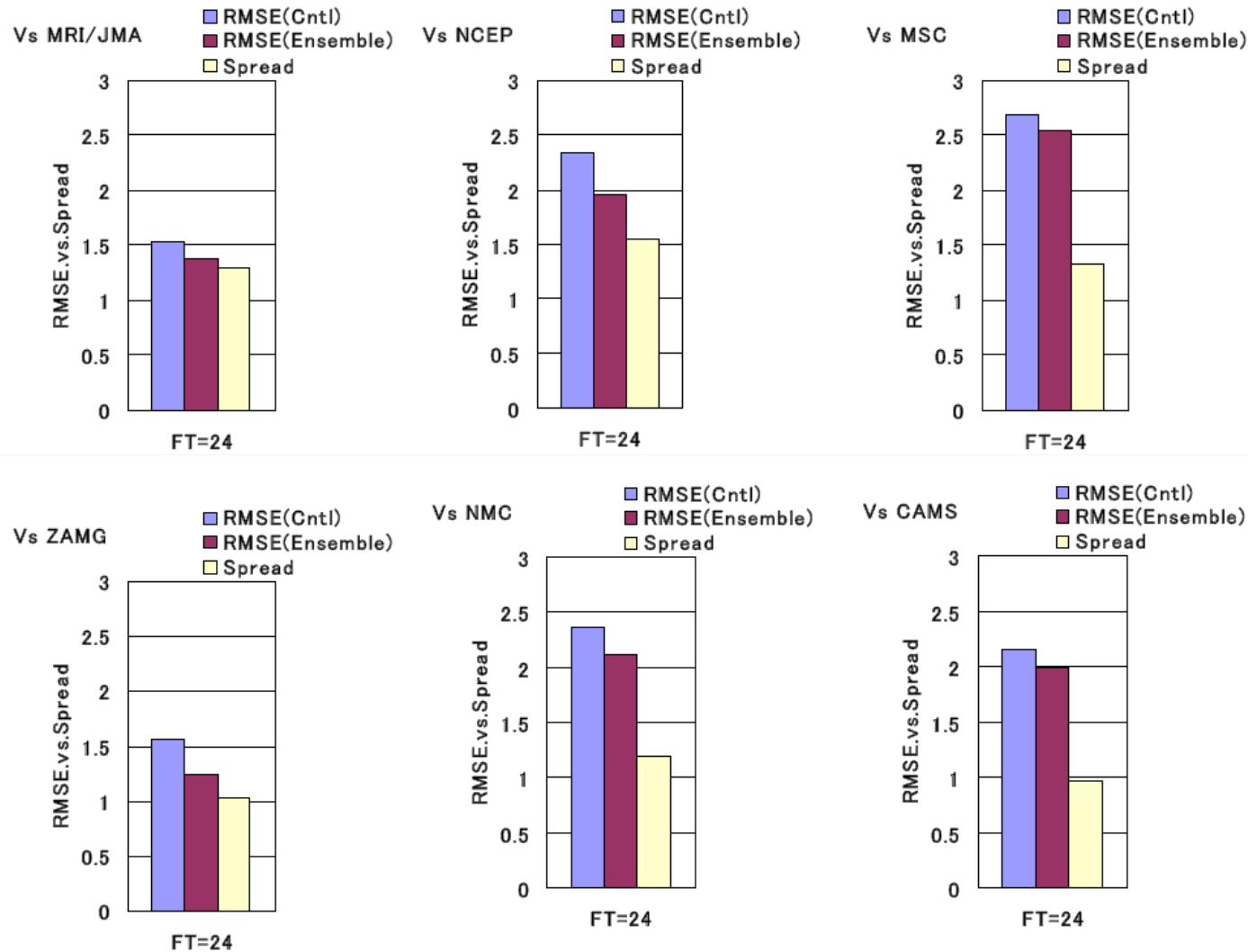
1. Kann, Wittmann, Wang and Ma, 2009: Calibrating 2m Temperature of Limited Area Ensemble Forecasts Using High Resolution Analysis, accepted by *Mon Wea. Rev.*
2. Wang, Kann, Bellus, Pailleux and Wittmann, 2009: A strategy for perturbing surface initial conditions in LAMEPS, submitted to *Atom. Sci. Letter.*
3. Wang, Bellus, Wittmann, Steinheimer, Ivatek-Sahdan, Kann, Tian, Ma, Tascu and Bazile, 2009: The Central European limited area ensemble forecasting system: ALADIN-LAEF, prepared for *Q. J. R. Meteorol. Soc.*
4. Weidle, Wang, Tian and Wang, 2009: Strategies for using Clustering analysis of ECMWF EPS in LAMEPS. In preparation for *Tellus.*
5. Bellus, Wang, Tian and Ma, 2009: Blending technique for initial perturbation in LAMEPS. In preparation for *Tellus.*

**The scientific results archived within the B08RDP project are in preparation for *Bulletin American Meteorol Soc*, and *Wea. and Forecasting.***

---

# B08RDP - verification against initial conditions

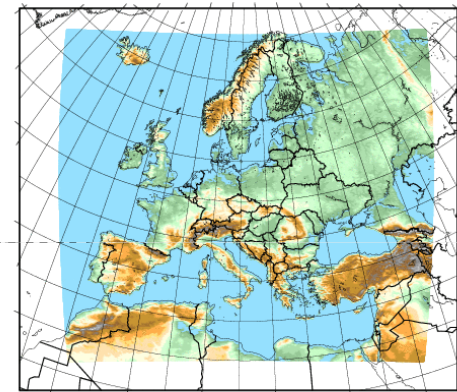
## T2m, RH, Press, Vs \*intercomparison



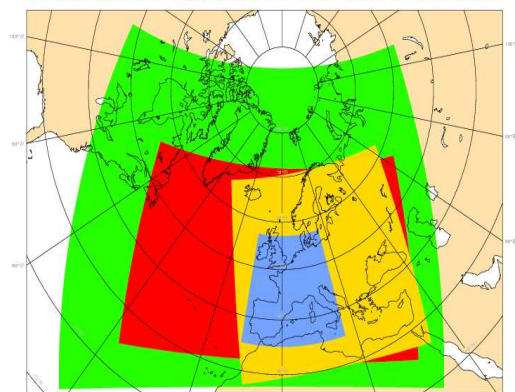
# Technical Actions (2009)

## Common LACE technical actions

- **LACE WEB pages (SHMI)**
- ✓ **ALADIN deterministic operative products (7 AR + EC+ LM + **ALARO5km**)**
- ✓ **ALADIN pEPS Multigrams for LACE Capital c**
- ✓ **ALADIN-LAEF (Limited Area EnsembleForec probability charts and multigrams**
- ✓ **LACE Forums (DA, Physics, ... Dynamics)**
- **Contribution to HARMONIE Scripting system**
- **Toward LACE Reference application (?)**  
**ALADIN/Europe - 6.5km at ECMWF**



Domains of 4 consortia reference models



### **Actions**

- ✓ **ETs at SRNWP WS**
- ✓ ***LACE at Interoperability Program (ALADIN coord.)***
- **LACE at Verification Program (to define representative)**

### **Questions**

- ***to add High-res national observations to OPLACE***
- ***to co-ordinate pre-process of observations***
- ***to co-ordinate links between EUMETNET programs***

### **Imagine**

- .....

- *“There is no such thing as free DA, local teams are necessary ”*
- *“Shared actions happened after all other IT/human resources were already spent”*
- *“No code optimization, no future! (but no candidates either)”*
- *“ We will take care on your BU at ECMWF”*



# SRNWP Consortia in Europe



## ALADIN

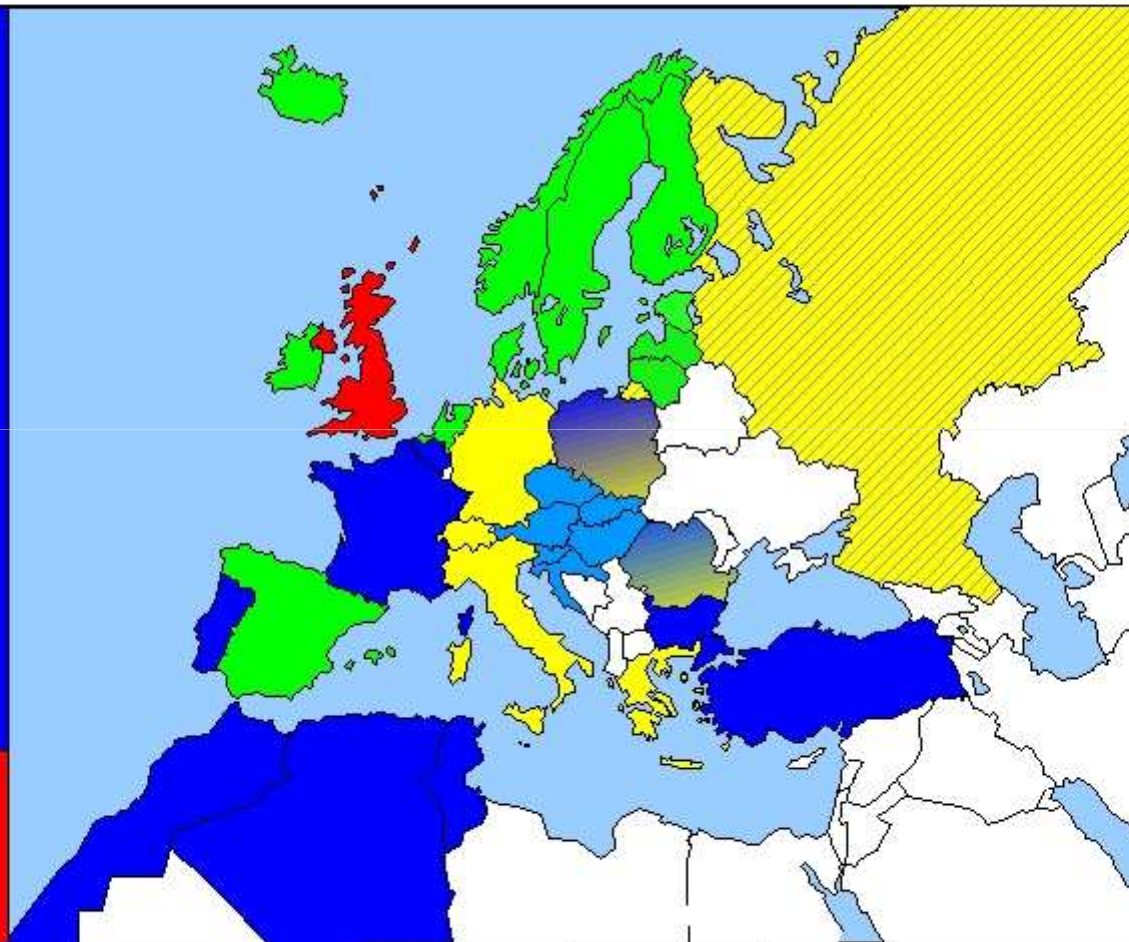
Algeria  
Belgium  
Bulgaria  
France  
Morocco  
Poland  
Portugal  
Tunisia  
Turkey

Austria  
Croatia  
Czech Rep.  
Hungary  
Romania  
Slovakia  
Slovenia



## UKMO

United Kingdom



## HIRLAM

Denmark  
Estonia  
Finland  
Iceland  
Ireland  
Netherlands  
Norway  
Spain  
Sweden  
(Latvia)  
(Lithuania)

## COSMO

Germany  
Greece  
Italy  
Poland  
Romania  
Switzerland  
(Russia)

